

Function for Saving Client Application Configuration on the Server Side



The description is relevant for software version [2.10.99.99](#) and newer.

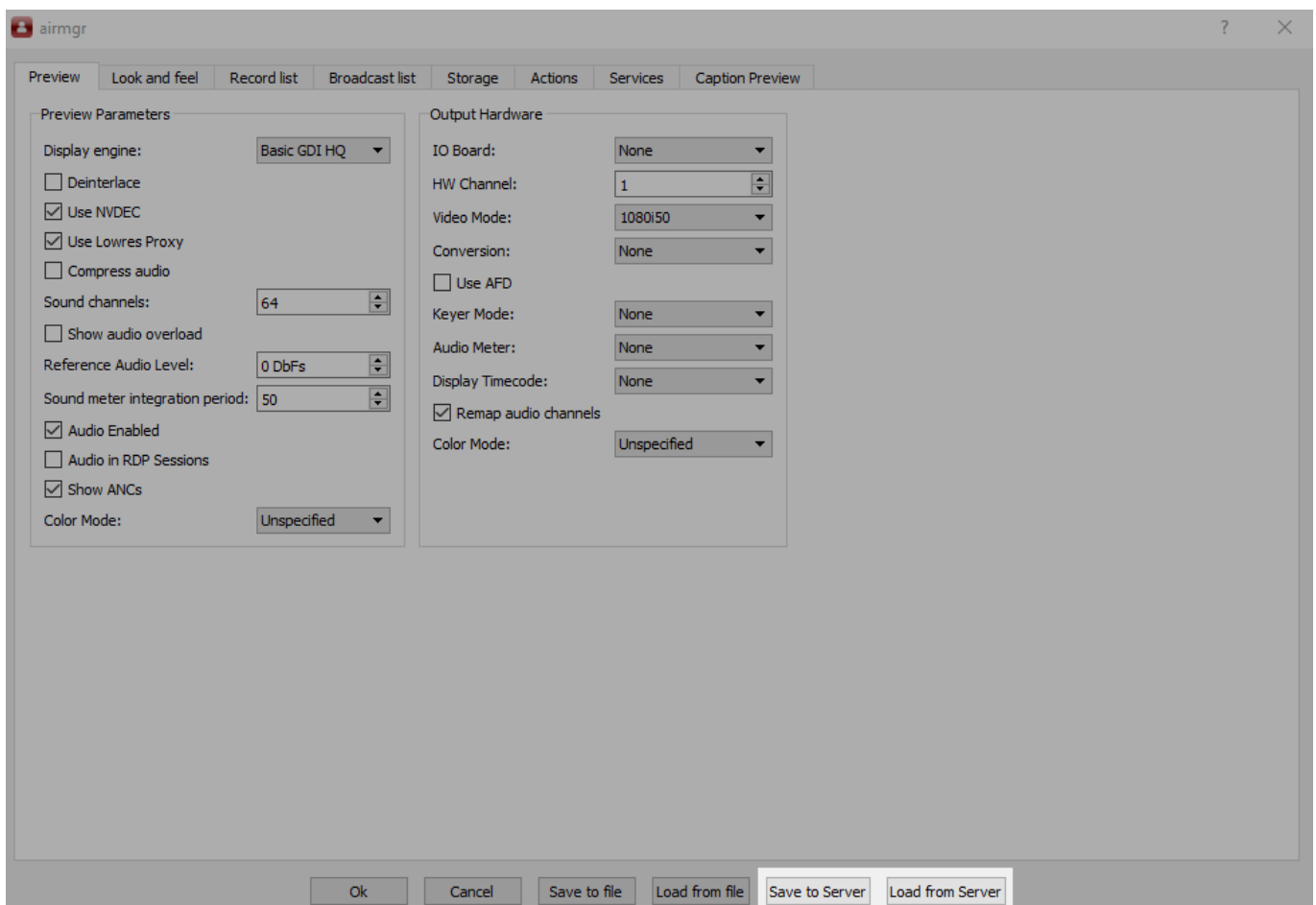


Can be used in conjunction with [Skylark Workspace](#).

The [2.10.99.99](#) version added the ability to save and restore the configuration of client applications (Air Manager, Multiscreen, Router Client, etc.) using the [module Storage](#).

Configuration

Function settings are available from the client application's settings window:



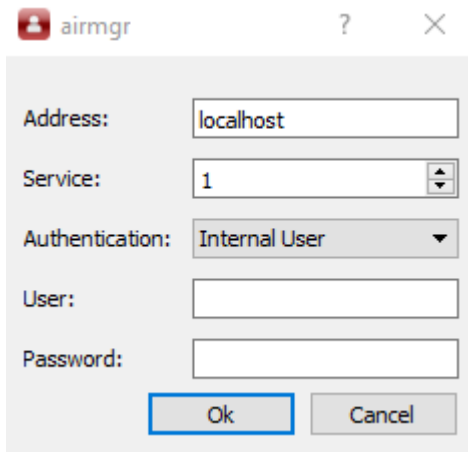
Two actions are available:

- **Save to Server** - opens a dialogue box to save the current configuration to the server.
- **Load from Server** - opens the dialogue box for restoring the configuration from the server.

Save

Click the “Save to Server” button to open the dialogue box for saving the current configuration to the Storage module storage.

Specify the data to connect to the Storage module:

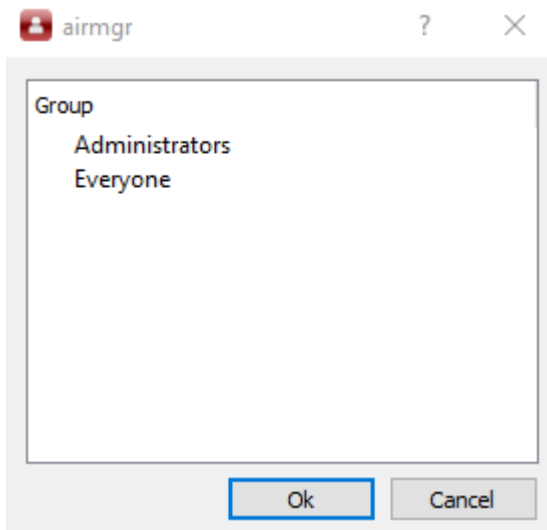


The screenshot shows a dialog box titled 'airmgr' with a question mark icon and a close button. It contains the following fields and controls:

- Address:** A text input field containing 'localhost'.
- Service:** A dropdown menu with '1' selected.
- Authentication:** A dropdown menu with 'Internal User' selected.
- User:** An empty text input field.
- Password:** An empty text input field.
- Buttons:** 'Ok' and 'Cancel' buttons at the bottom.

The connection settings are identical to those used on the [Storage| tab](#).

If the settings are correct, the next step will open a window with a list of user groups:



The screenshot shows a dialog box titled 'airmgr' with a question mark icon and a close button. It contains a list of user groups:

- Group**
- Administrators
- Everyone

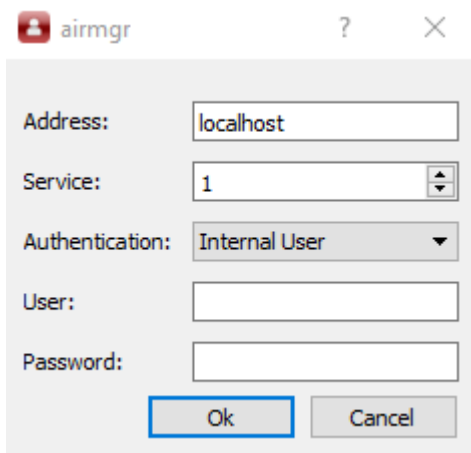
At the bottom, there are 'Ok' and 'Cancel' buttons.

It is possible to save one configuration per group. If you want to give the user a choice of multiple configurations, then create multiple groups and add the user account to them.

Restore

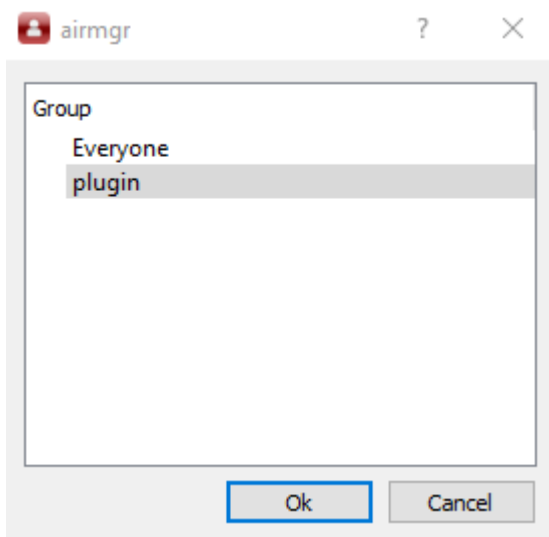
Click the “Load from Server” button to open the dialogue box for saving the current configuration to the Storage module storage.

Specify the details to connect to the Storage module:



The connection settings are identical to those used on the [Storage| tab](#).

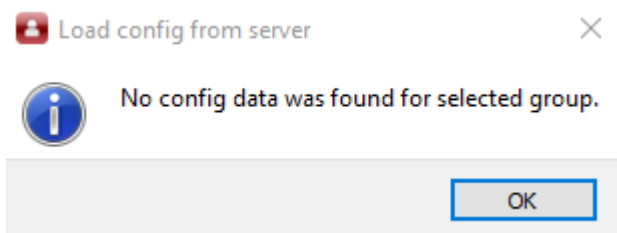
If the settings are correct, the next step will open a window with a list of user groups:



Errors

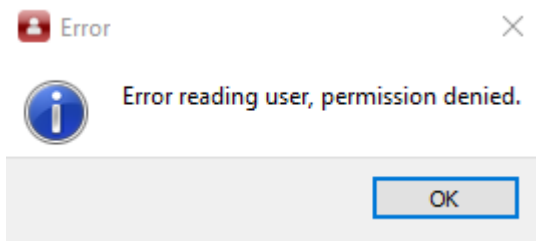
No Data

The “No config data was found for selected group” error occurs when there is no saved configuration for the group selected for recovery.



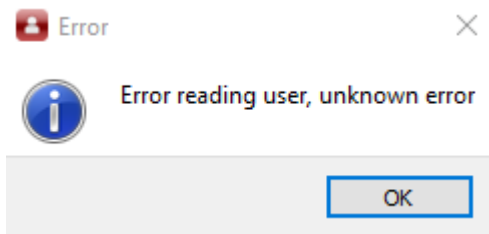
Access Error

The error “Error reading user, permission denied.” occurs when incorrect data is specified during authorisation.



Unknown Error

The error “Error reading user, unknown error.” occurs when you cannot connect to the server.



From:
<http://wiki.skylark.tv/> - **wiki.skylark.tv**

Permanent link:
http://wiki.skylark.tv/modules/storage/server_side_client_configurations

Last update: **2025/01/16 09:30**

